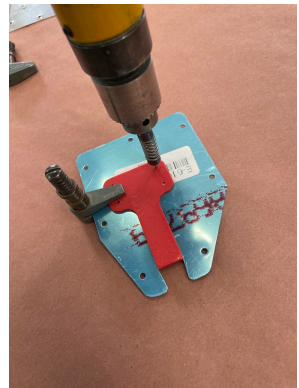


Trim Cable Anchor Plate Installation

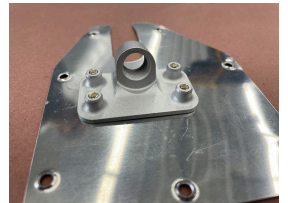
1- Place the Red Drill Guide in the slot of the trim cable access plate. The Trim Cable Anchor Plate is universal, so it doesn't matter which side you drill.



2-Drill the 4 holes through the Drill Guide Template with a 3/32 (#40) drill. Remove the template and now drill the holes with a #28 drill.



3- Dimple the 4 holes. Make sure the dimples are on the same side (if you already have completed this step in the plans) as the attachment holes of the plate.



4- Check the fit by inserting the 4 screws. **Do not use a powered screwdriver!** If any screws are not going in with a hand screwdriver, use a #6-32 tap and “clean” the hole out. Don't force it. Not nice :)

5- Final assemble with one drop of Blue Loctite. Done. Enjoy!

