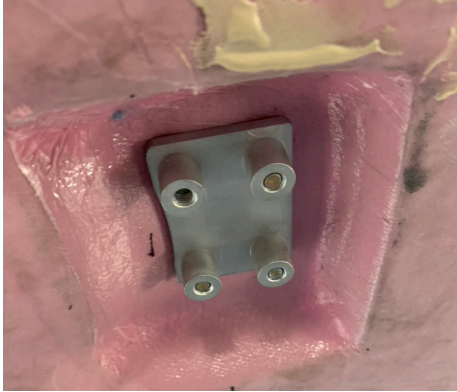


## **Cabin Door Hinge Capture Plate**

1- Install and drill door hinge into cabin top per Vans RV10 plans.



2- Insert screws partially through the steel hinge loosely one at a time. **You may need to trim one side of the plate (Scotchbrite wheel works great) because of the “hump” in the fiberglass for attaching the gas strut bracket might interfere.** If any screws are difficult to screw in, it may be because of the angle of your drilled hole into the fiberglass top. Run a 10/32 tap through the steel hinge/fiberglass/capture plate **“difficult”** hole just to “clean it up.” Do not try to screw the screws in with an impact screwdriver or you may easily cross thread the plates.

3- Scuff up the area where the plate will go onto the cabin top with 40 or 80 grit. You want good adhesion to the surface for the epoxy. The Cabin Door Capture Plate is already Glass Beaded, so no prep is needed (unless you want to prime it).

4- Mix up a slurry of epoxy with micro balloons (we use West Epoxy with 406 added) to the consistency of peanut butter. Place some epoxy between the Cabin Door Capture Plate and the cabin top. Put some grease or wax on the screws (wipe off excess). Now screw in all four screws to the capture plate. This will make a nice flat mating surface for the capture plate after it cures. The screws will back out easily after the epoxy cures using an impact screwdriver if needed.

5- When remounting the hinge, if any screws don’t go in easily, clean up the hole with a 10/32 tap. Do not force the screw in with an impact driver!

7- You can now cover over the capture plate if desired. The door has to come off many, many times while fitting and priming and painting it (we have done it about 10 times). These capture plates makes the job much easier! Just unscrew the hinges from the cabin top and the door comes off. No need to be a contortionist to hold a wrench on the nuts on the underside of the cabin during assembly!